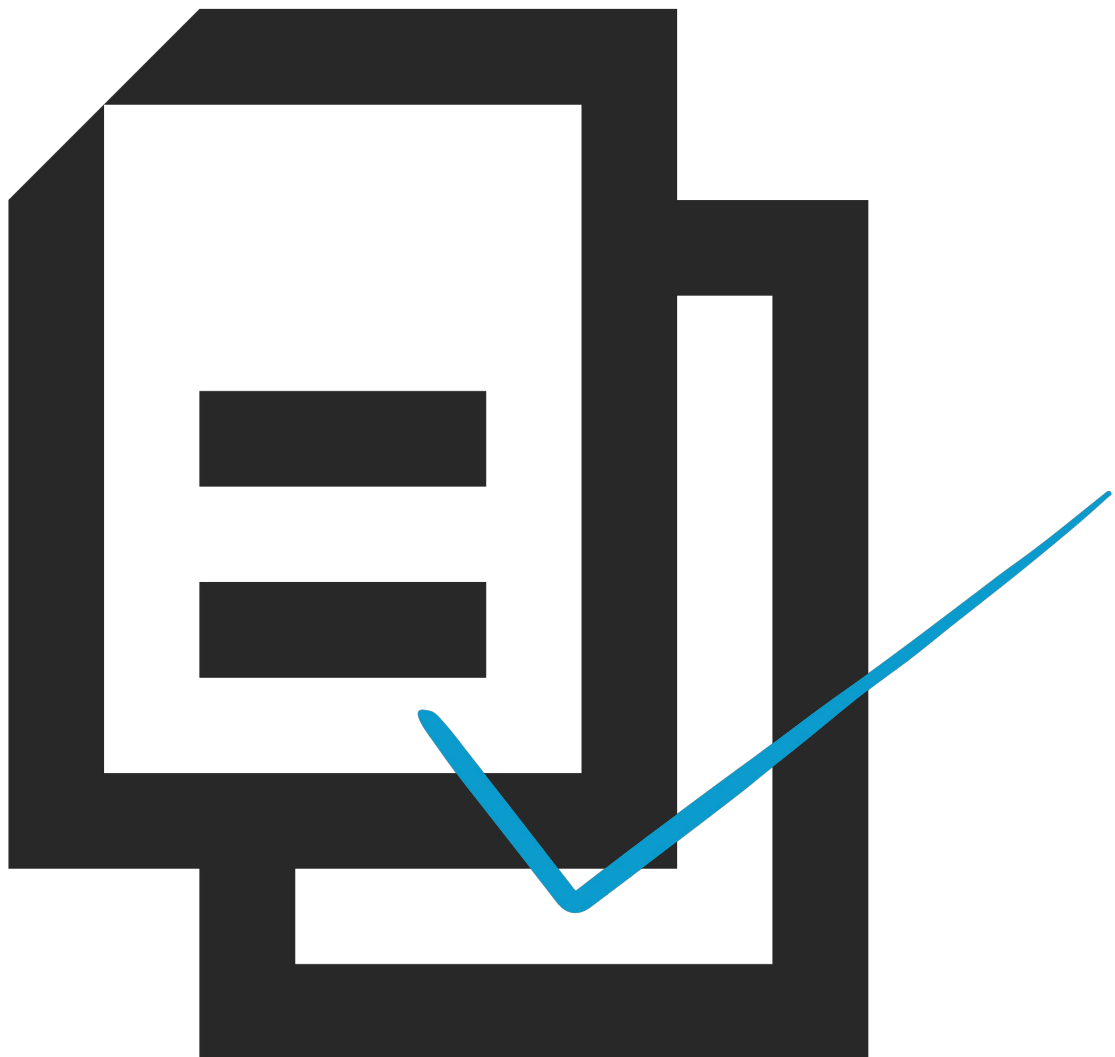




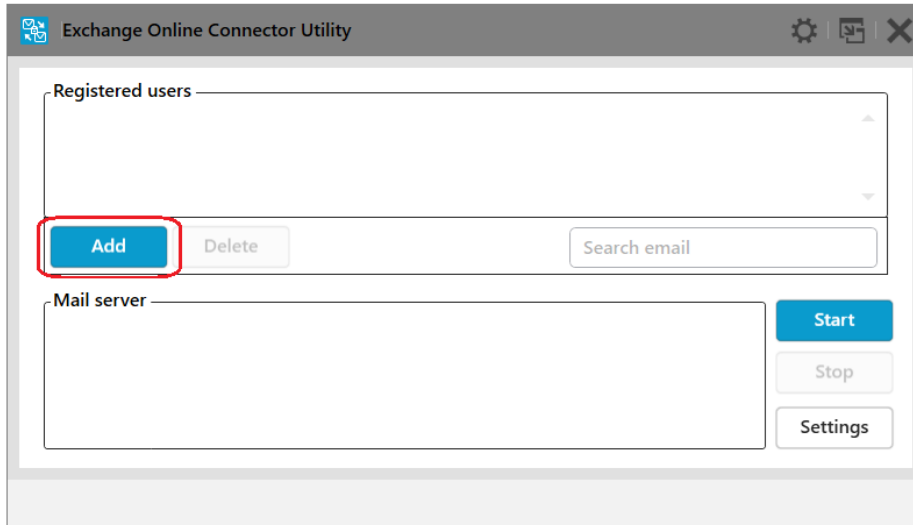
Kyocera Exchange Online Connector Utility

Installation and configuration guide

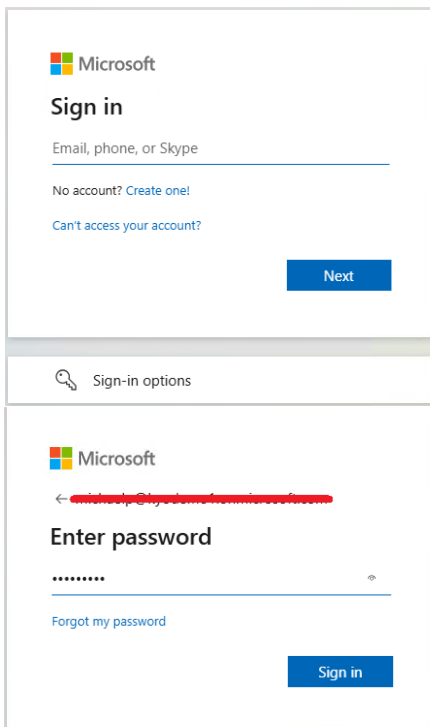


Installation and Configuration

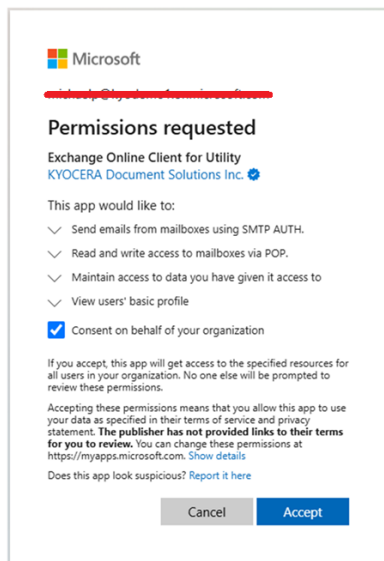
1. Run the msi (ExchangeOnlineConnectorUtility_Installer_1.1.1404.msi) and follow the prompts.
2. Once installed, open the Exchange Online Connector, and click 'Add'. You will automatically be redirected to the Microsoft control keys.



3. Enter your Microsoft email account and password.

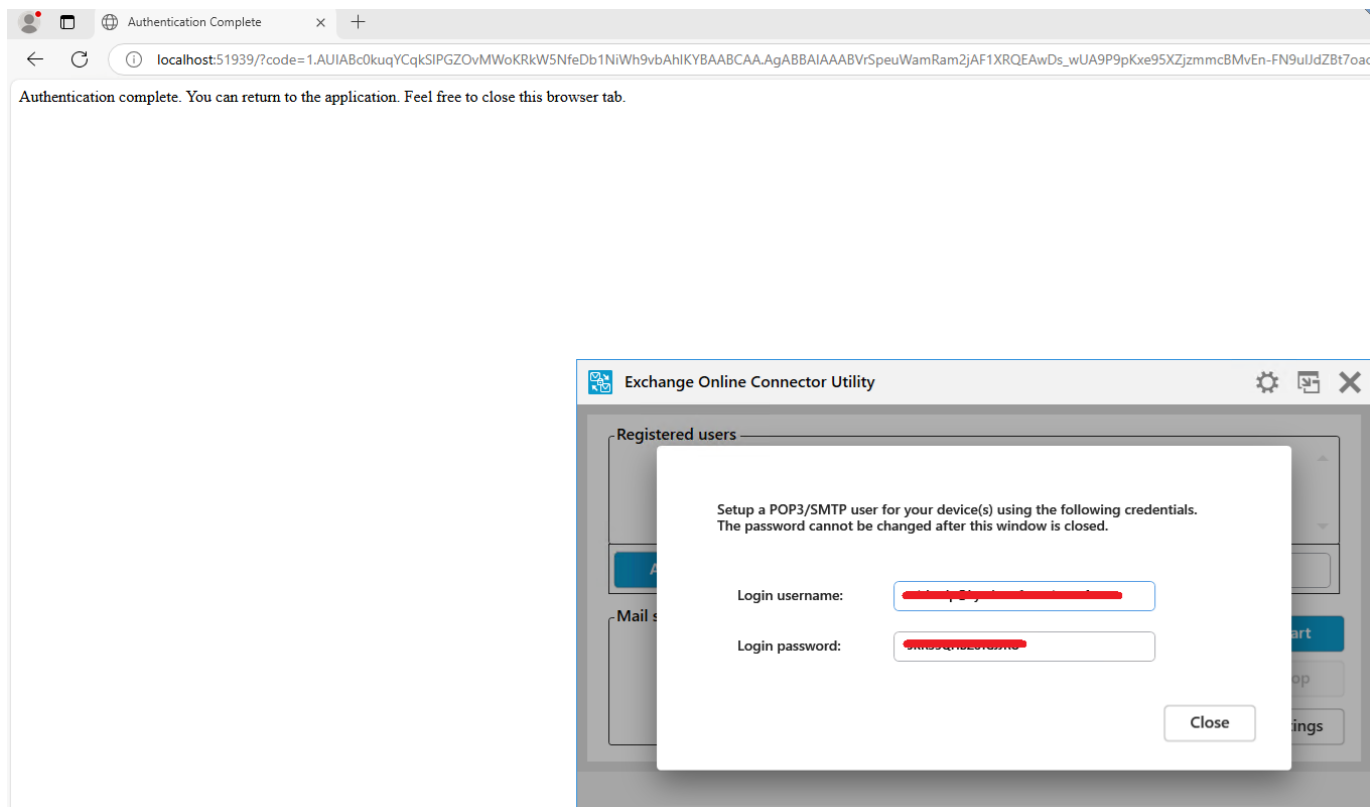


4. You will need to request authority to allow access to the connector.



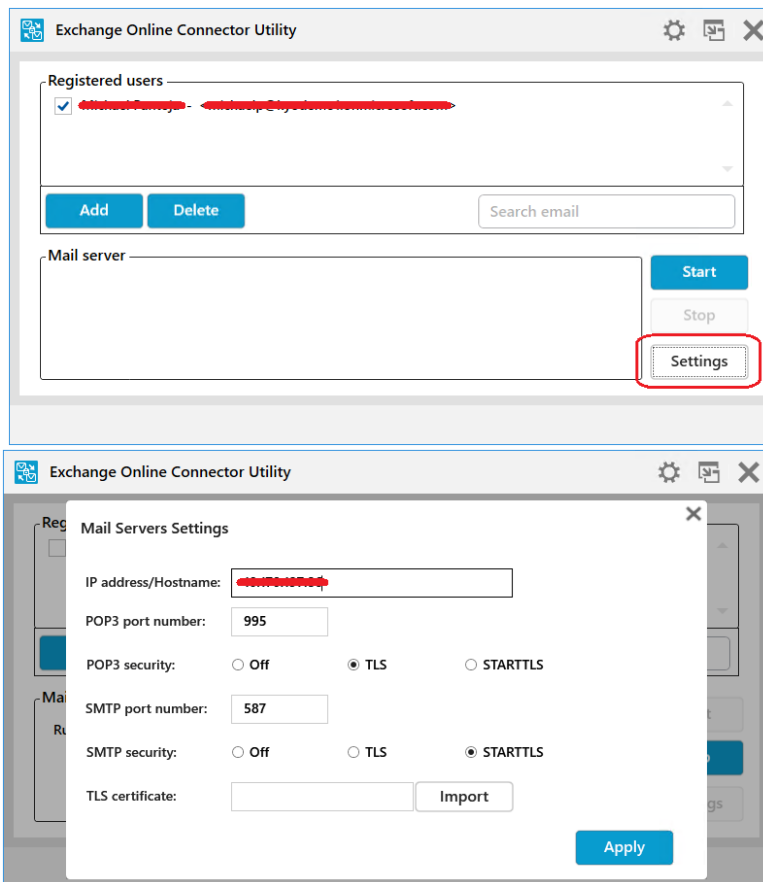
5. A successful authorisation message will be displayed once complete.

Once the authentication is complete, the Utility will then display the login username and password for the registered user. This is the login username and password you will need to use when configuring SMTP via the CCRX.

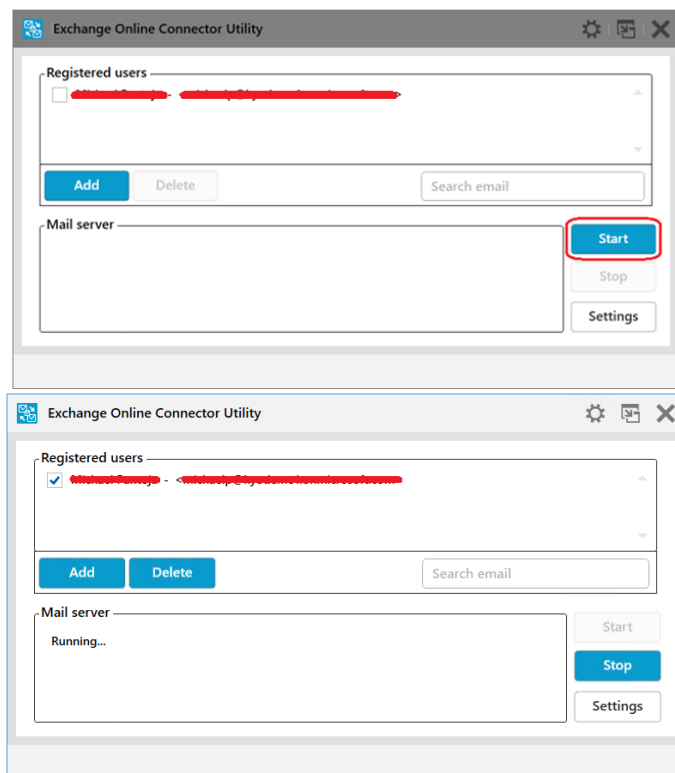


6. Click Settings to configure the Mail Server settings within the connector.

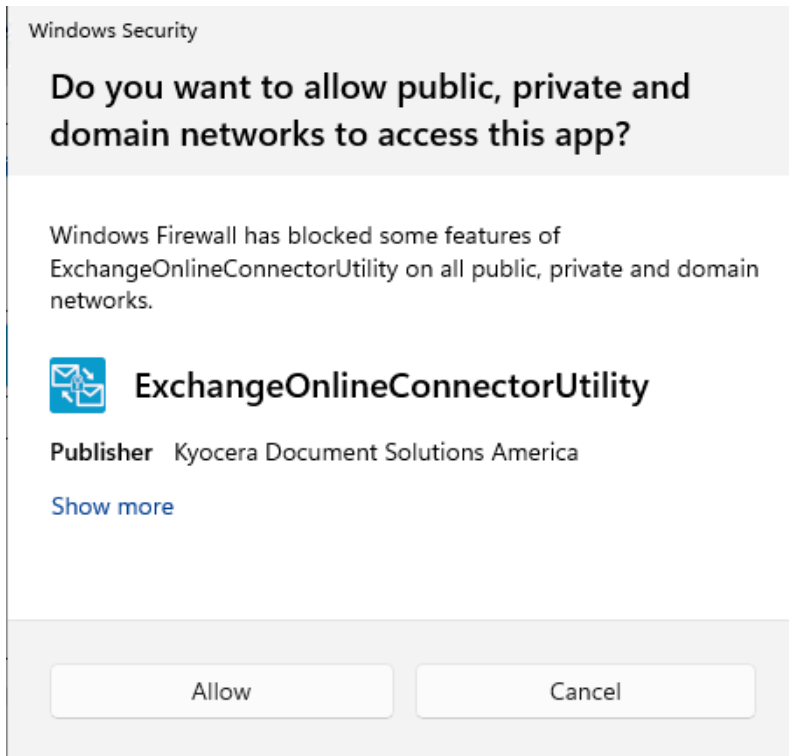
The IP Address/Hostname and SMTP security information will be used on the device. Click 'Apply'



7. Click 'Start' to the commence the operation of the connector. The Status 'Running' will be displayed.



8. Allow this through their Windows Firewall when prompted.



Configuring access for Microsoft Business accounts

Note: Before using the Connector, you must enable 'Authenticated SMTP' to add mailbox access for the user who you will be using for authentication. This is done via the Microsoft 365 admin center.



Manage email apps

Choose the apps where Michael Pantoja can access Microsoft 365 email.

- ☒ Outlook on the web
- ☒ Outlook desktop (MAPI)
- ☒ Exchange web services
- ☒ Mobile (Exchange ActiveSync)
- ☒ IMAP
- ☒ Pop
- ☒ Authenticated SMTP